

# NS309 RA 2 story

## NS309 RA 2 story

Bedrooms: 3  
 Baths: 25  
 Approximate sq. ft: 2378  
 Dimensions: 28 x 52

### Service

- Custom Built Homes
- Real Estate
- Insurance
- Financing
- Rentals
- Excavating
- Septic
- Wells
- Garages
- Basements
- Landscaping
- Spec built homes
- Building Lots
- Subdivisions
- & more



Phone: 888-835-4986  
 Sales@NelsonHomesVa.com

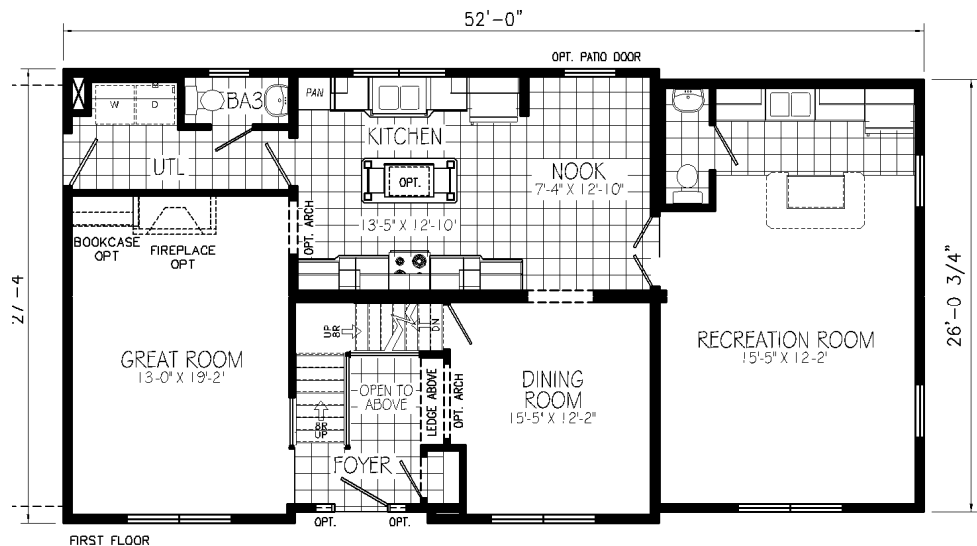
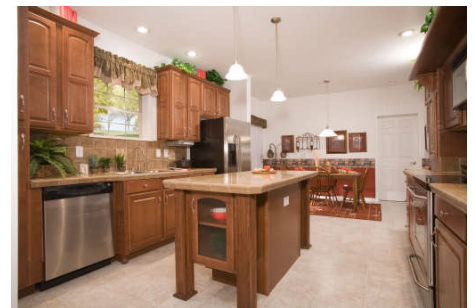
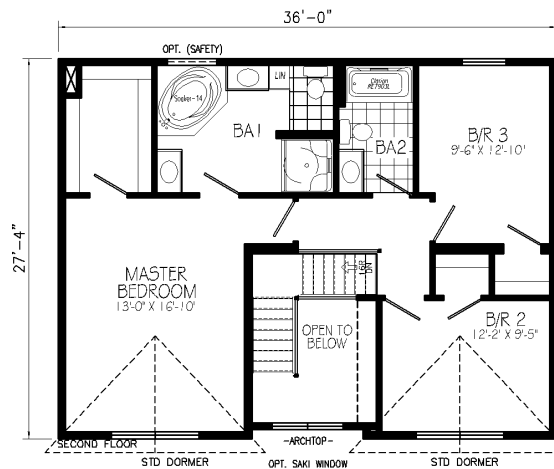


Phone 800-947-1838  
 Sales@BenniesHomesVa.com

1405 Thomas Nelson Hwy  
 Arrington Va. 22922  
 www.NelsonHomesVa.com  
 www.BenniesHomesVa.com  
 Fax: 434-263-6490



Lovely two story home with double gable front. Floorplan with great room and dining room. Game room featuring mini bar option.



NS309R-A 28x52 APPROX. 2378 Sq. Ft.

Home exteriors may vary from actual construction. Floor plans, room sizes, exteriors, and pictures are approximate and have optional features. Refer to construction prints