

NS309A 2 story

NS309A 2 story

Bedrooms: 3
 Baths: 2.5
 Approximate sq. ft: 1961
 Dimensions: 28 x 36

Service

Custom Built Homes
 Real Estate
 Insurance
 Financing
 Rentals
 Excavating
 Septic
 Wells
 Garages
 Basements
 Landscaping
 Spec built homes
 Building Lots
 Subdivisions
 & more



Lovely two story home with double gable front. Large great room, and formal dining room.

Breakfast nook off the kitchen Optional front porch and attached garage constructed on site.

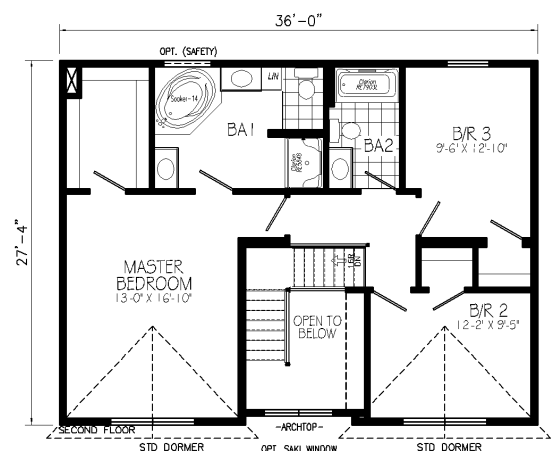
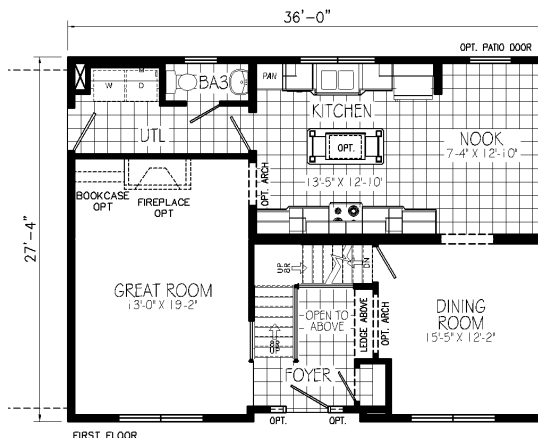


Phone: 888-835-4986
 Sales@NelsonHomesVa.com



Phone 800-947-1838
 Sales@BenniesHomesVa.com

1405 Thomas Nelson Hwy
 Arrington Va. 22922
 www.NelsonHomesVa.com
 www.BenniesHomesVa.com
 Fax: 434-263-6490



NS309A 28x36 APPROX. 1961 Sq. Ft.